

Introducing Proxima

The closest star you can reach,
The MAM you can afford



Geminisoft Co., Ltd.

www.gemiso.com
www.gemiso.co.kr



Introducing Proxima

Geminisoft is pleased to present Proxima Content Management solution here. We welcome the opportunity to work with you and provide a solution to your requirements.

Many of our customers have expressed their needs and have successfully implemented a comprehensive Proxima Content Management solution consisting of some or all of the following:

- Proxima Content Management workflow engine
- Multifaceted media browsing over Web technologies
- Easy and powerful search interface
- Dynamically configurable metadata
- Menu integration with commercial NLEs
 - Apple's FCP
 - GrassValley's Edius
 - Adobe Premiere
- Seamless integration with various third-party systems (Ingest, BMS, automation, archive and more)



We look forward to working with your organization and are available for any questions at anytime.

- the Gemiso team

1

2

3

System Architectures

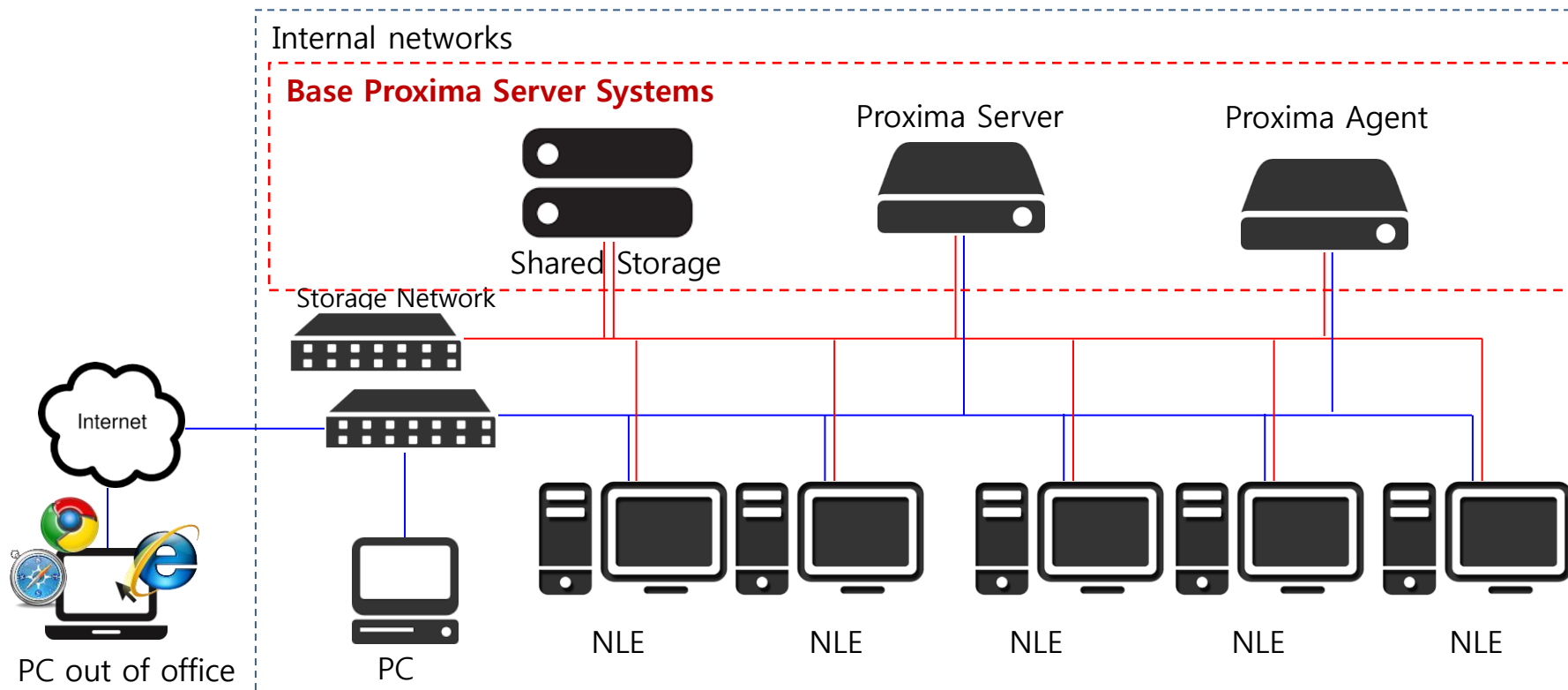
Basic System Configuration

Extended System Configuration

Software Diagram

Basic System Configuration

Proxima Content Management system can be installed easily on your servers. Proxima systems usually requires at least two server systems to provide stable/safe data storing feature and fast/efficient data processing.(transfer, transcode and so forth)

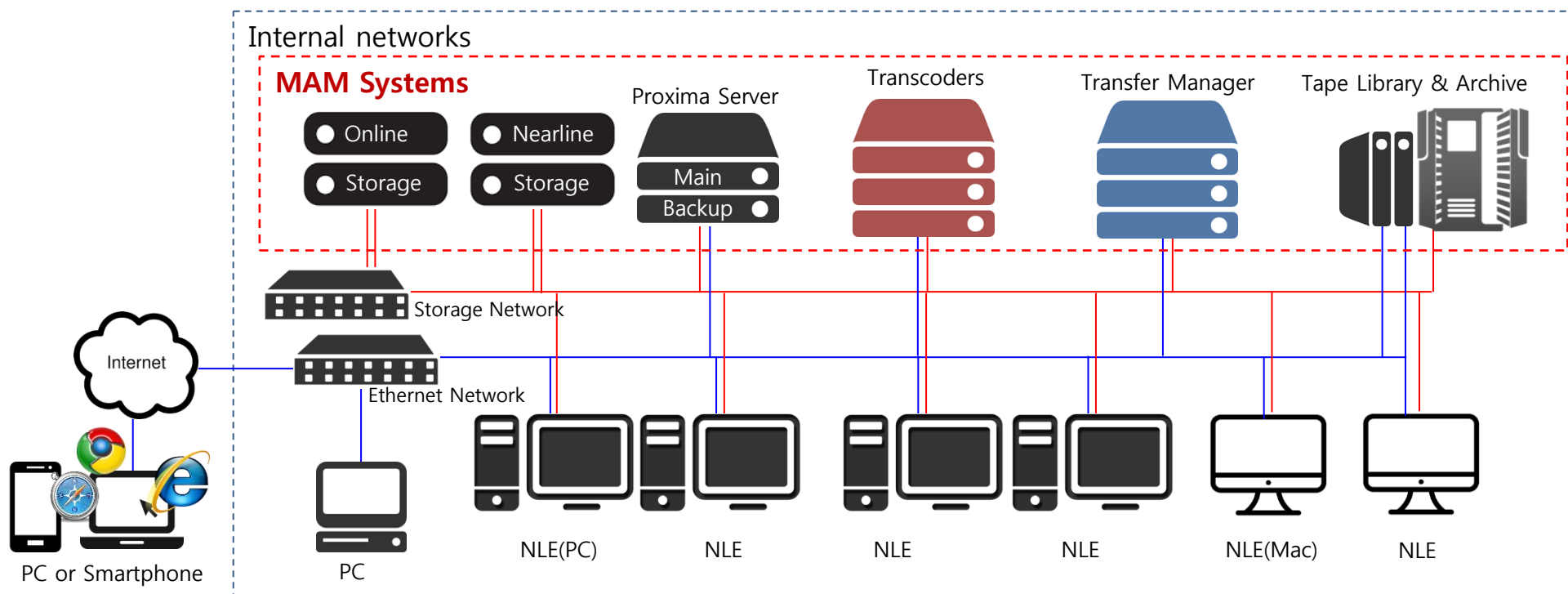


** NLE can be Windows or Mac based computers such as **Edius**, **Premiere**, **Media Composer** on PC or **Final Cut Pro** on Apple computers.

** Storage Network can be; **1G Ethernet**, **10G Ethernet** and **Fibre Channel SAN**.

Extended System Configuration

Proxima Content Management system can be expanded with more servers for more powerful and stable working environment. Proxima Server can be working in Fault-Tolerant mode with main/backup server and the Agent can be easily divided and expanded into multiple Transcoders, Transfer Manager or other functional systems.



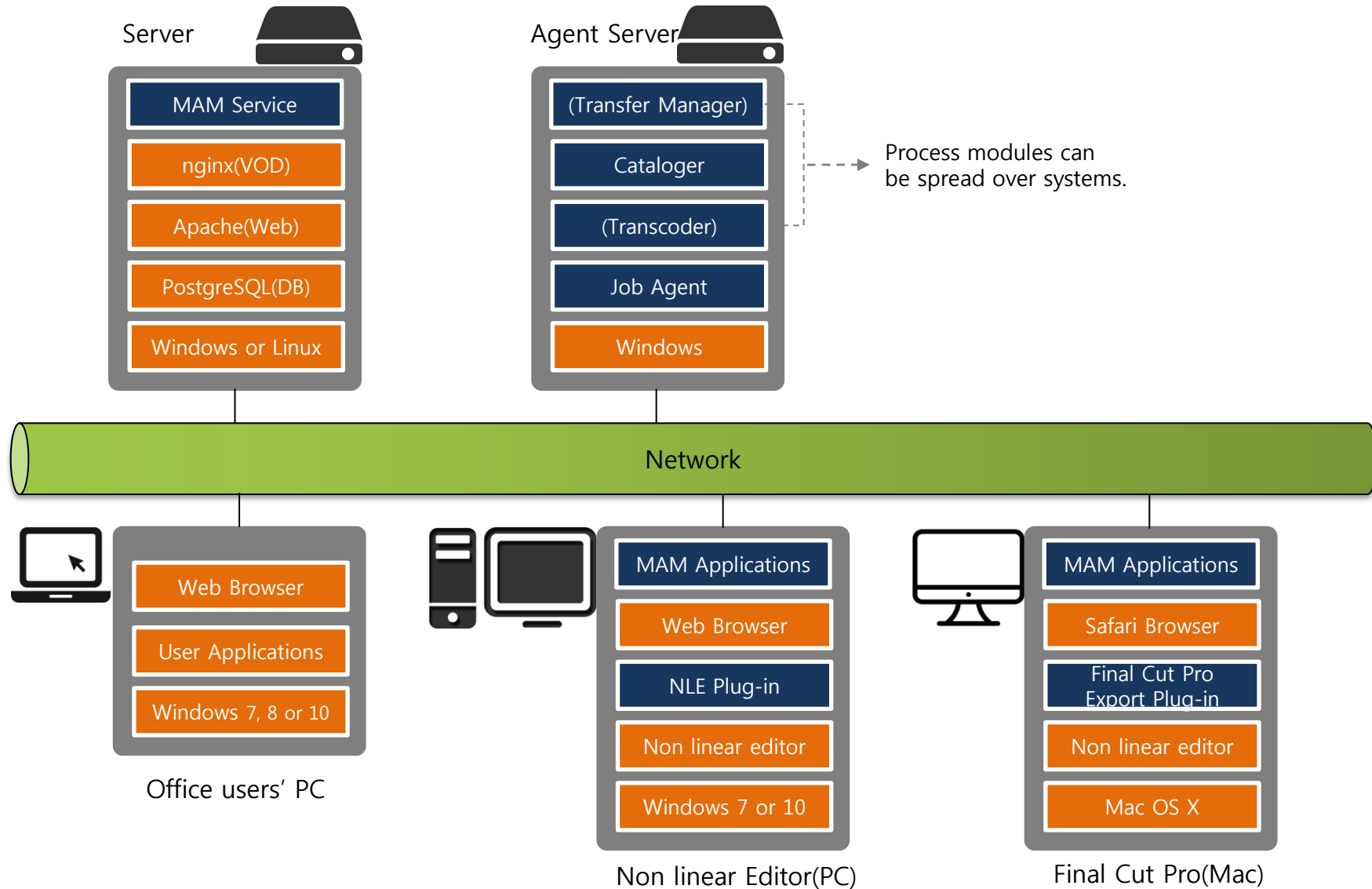
** NLE can be Windows or Mac based computers such as **Edius, Premiere, Media Composer** on PC or **Final Cut Pro** on Apple Mac.

** Storage Network can be ; **1G Ethernet, 10G Ethernet** and **Fibre Channel SAN**.

** Users are also able to connect/search media using **Laptop, Smartphone** or **Tablet system** from outside.

** Tape Library and Archive system requires **professional archive solutions** such as **SGL's Flashnet**.

Software Diagram



1

2

3

Product Overview

Ingest(File, VCR/Live, NLEs)

Browse from PC and Apple Mac

Browse from Mobile

Working with 3rd party tools

Modules

File Ingest

File Ingest module provides a way to register media files into Proxima MAM from Windows based PC or Apple Macintosh system. Users can preview the media files from File Ingest program and add the description for the video files.

- **Media Types**

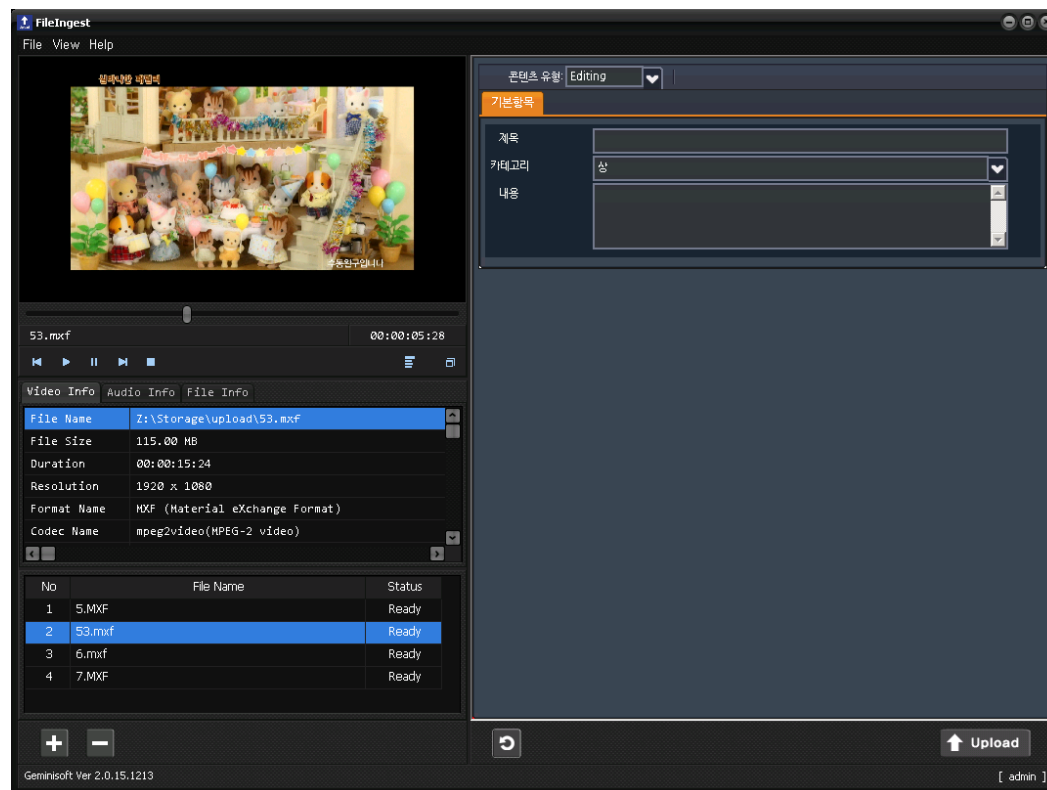
- Video files :
 - MXF, MOV, AVI, MKV and others.
- Audio files :
 - WAV, MP3, AC3 and others.
- Image files :
 - JPG, GIF, BMP, PNG, TGA and others.
- **Sequence Images :**
 - JPG, TGA, TIFF Image Sequence and other image formats in sequence.
 - Proxy is generated while files are in transfer.

- **Registering in <Groups> or <File by File>**

- Registered in a Group :
 - Multiple files with same metadata and considered as one media
- File by File :
 - Each file can have its own metadata and considered as multiple media in Proxima.

- **Supported Transfer Protocol**

- File System Transfer : Copy to NAS storage
- FTP, sFTP : FTP to MAM
- http, https : http transfer to MAM



File Ingest Module

Ingest from VCR/Live Feeds

Proxima supports several ways to ingest using video servers or I/O cards, directly into the main storage. All material (SD, HD, UHD, proxy, mezzanine and etc.) is stored in centralized storages that are directly available to users simultaneously, thus achieving maximum efficiency.

- **3 Products to ingest VCR/Live Feeds**
 - Ingest Manager : Using Video Servers(Omneon, K2, Nexio...)
 - Ariel Encoder(based on Matrox X.MIO 2/3 boards)
 - Proxima Encoder(based on I/O cards)
- **VCR control/Schedule**
 - SONY VCR control : Control VCR via RS-422 (BVW) protocol
- **Video Server Ingest**
 - Gemiso Ingest Manager
 - Omneon/Harris/GV K2 to encode
- **Proxy Transcoding while ingesting**
 - Video Servers
 - Omneon MediaDeck, Spectrum Series
 - Imagine Nexio servers and Nexio gateways
 - Grassvalley K2 Summit and Solo Series
 - Downloading and transcoding at the same time
 - Matrox based Encoder(Ariel Encoder)
 - Simultaneous proxy encoding as well as High resolution video encoding
 - I/O card based Encoder(Proxima Encoder)
 - High resolution files in XDCAM HD/IMX format and Proxy in h.264/AAC/mp4 at the same time



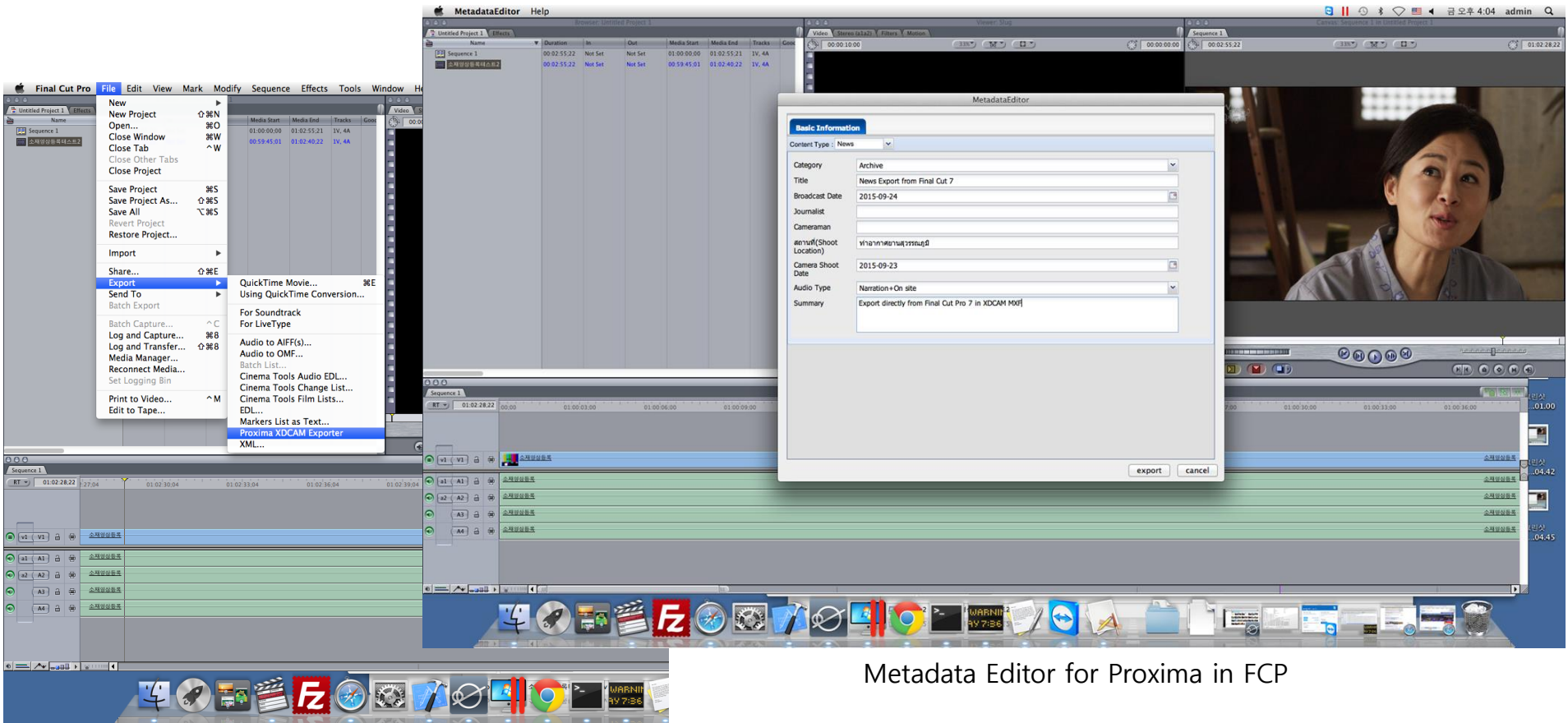
Proxima Encoder – SD/HD(up to 4ch)



Ariel Encoder – SD/HD/UHD(up to 8ch)

Ingest from Non-linear Editor(Apple Final Cut Pro 7)

Proxima provides integration with Final Cut Pro 7 to render media into Proxima. Final Cut Pro will render media into IMX/MXF for SD and XDCAM/MXF for HD.

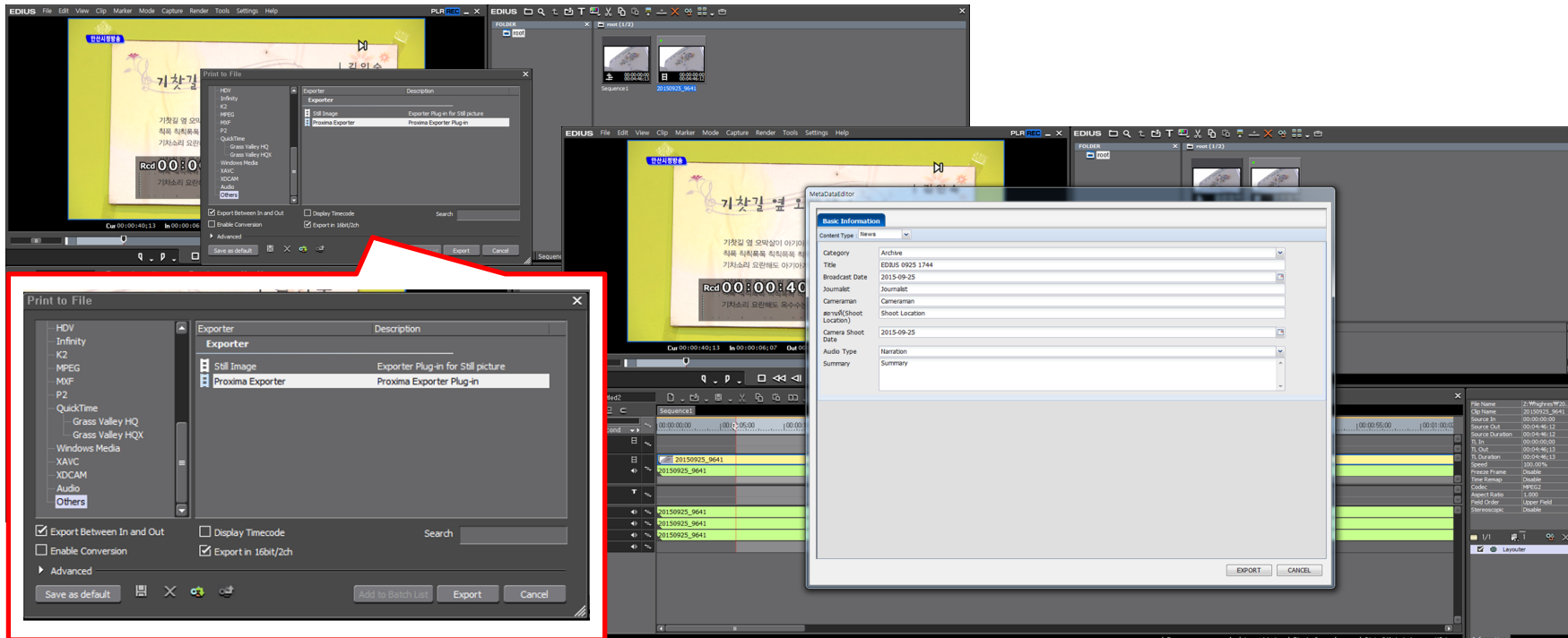


Metadata Editor for Proxima in FCP

Proxima Export Integration in FCP Menu

Grassvalley Edius Integration

Gemiso provides integration with Grassvalley Edius(ver. 6.5 or higher) to render(export) media into Proxima direct.

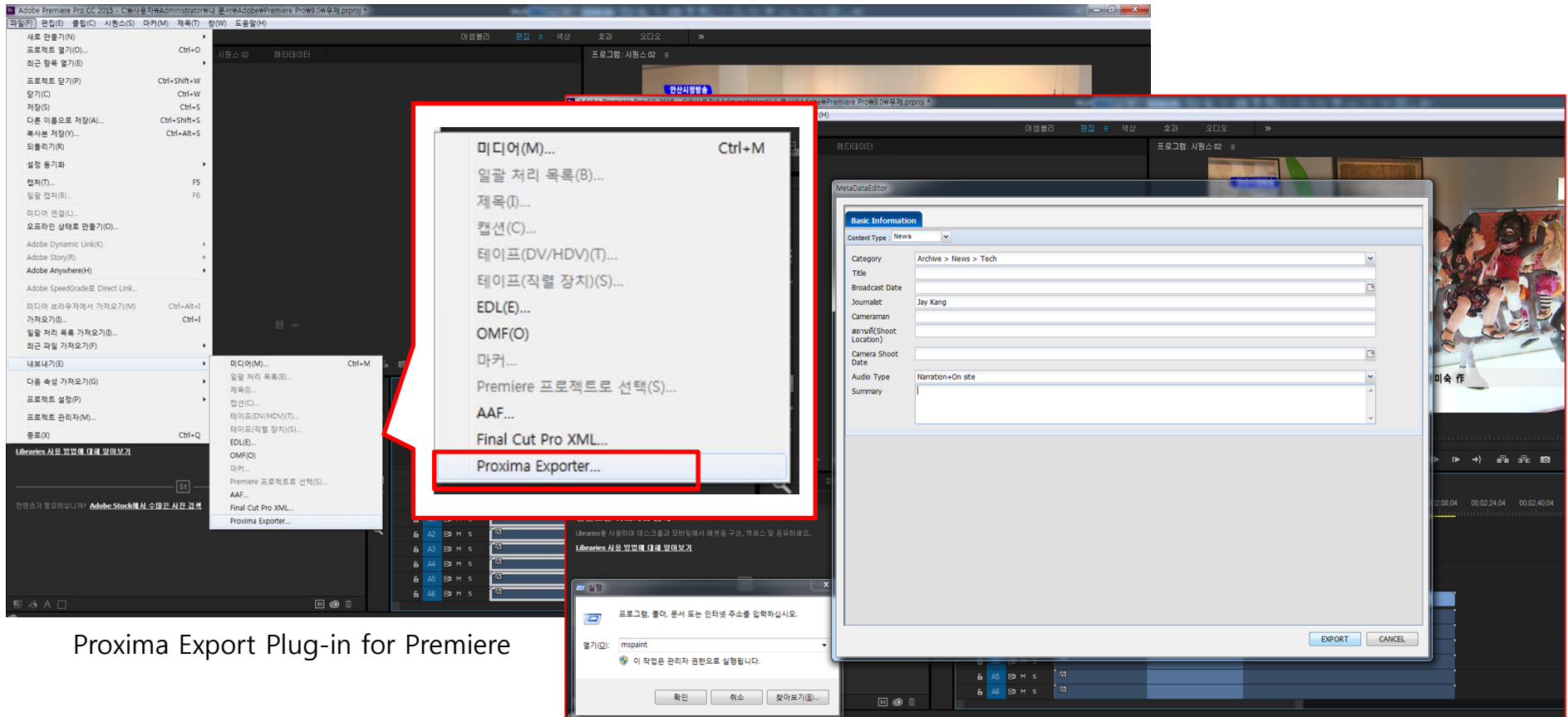


Proxima Export Plug-in for Edius

Metadata Editor for Proxima in Edius

Adobe Premiere Intergration

Gemiso provides integration with Adobe Premiere(version 7 or higher and CC version). From Adobe Premiere, users can export their output media to Proxima using Premier menu.



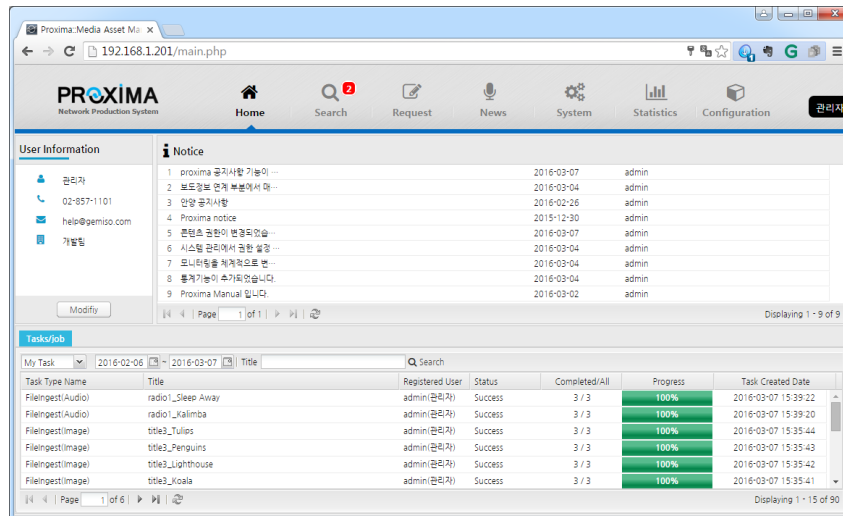
Proxima Export Plug-in for Premiere

Metadata Editor for Proxima in Premiere

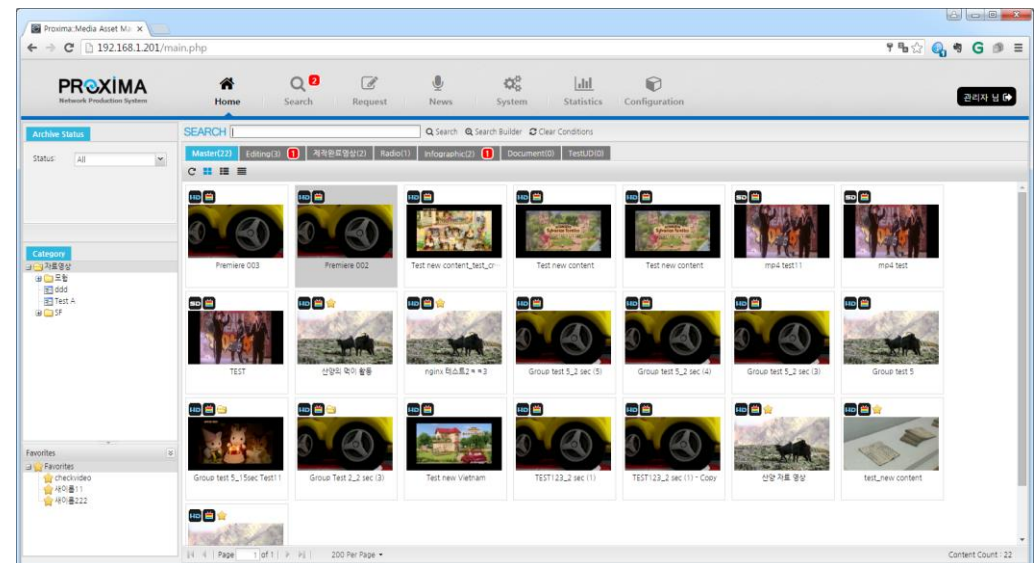
Browse from PC and Apple Mac

Media can be browsed through Web Browser; Google Chrome, Apple Safari, Mozilla Firefox and MS Internet Explorer. Using the latest Web technologies, users can browse from any devices from PC, Apple Mac and others.

Users can access/search/play-back/re-use/update as easy as using Internet sites.



Browser Intro – Dash board



Search in Web Browser

Search

Search is the most important functions to find the needed media from the Proxima. Proxima provides "Simple Search", "Category Browse" and "Search Builder" for helping users to locate the media efficiently and easily. Also Proxima comes with Text search engine.

- **Simple Search**

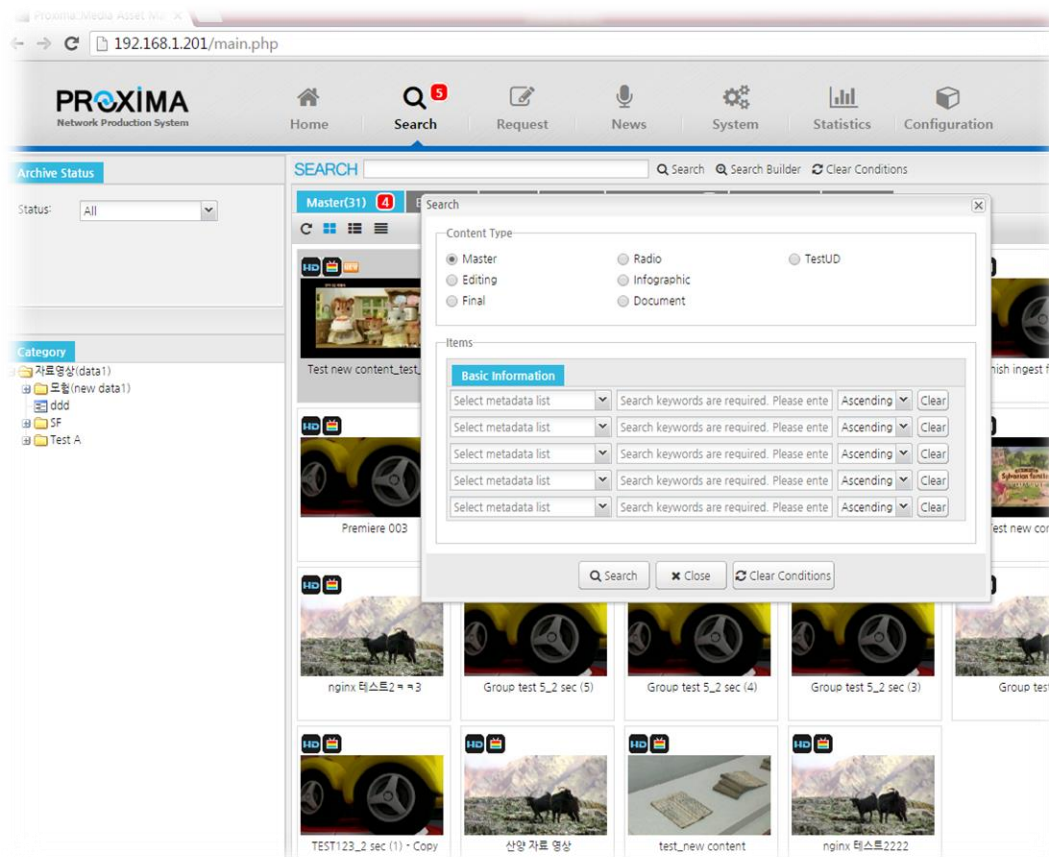
- Simple searches from the main search page with full text search
- Possible to connect to the local "Text Search Engine"

- **Category Browse**

- Users can browse media through the category like the folder browsing

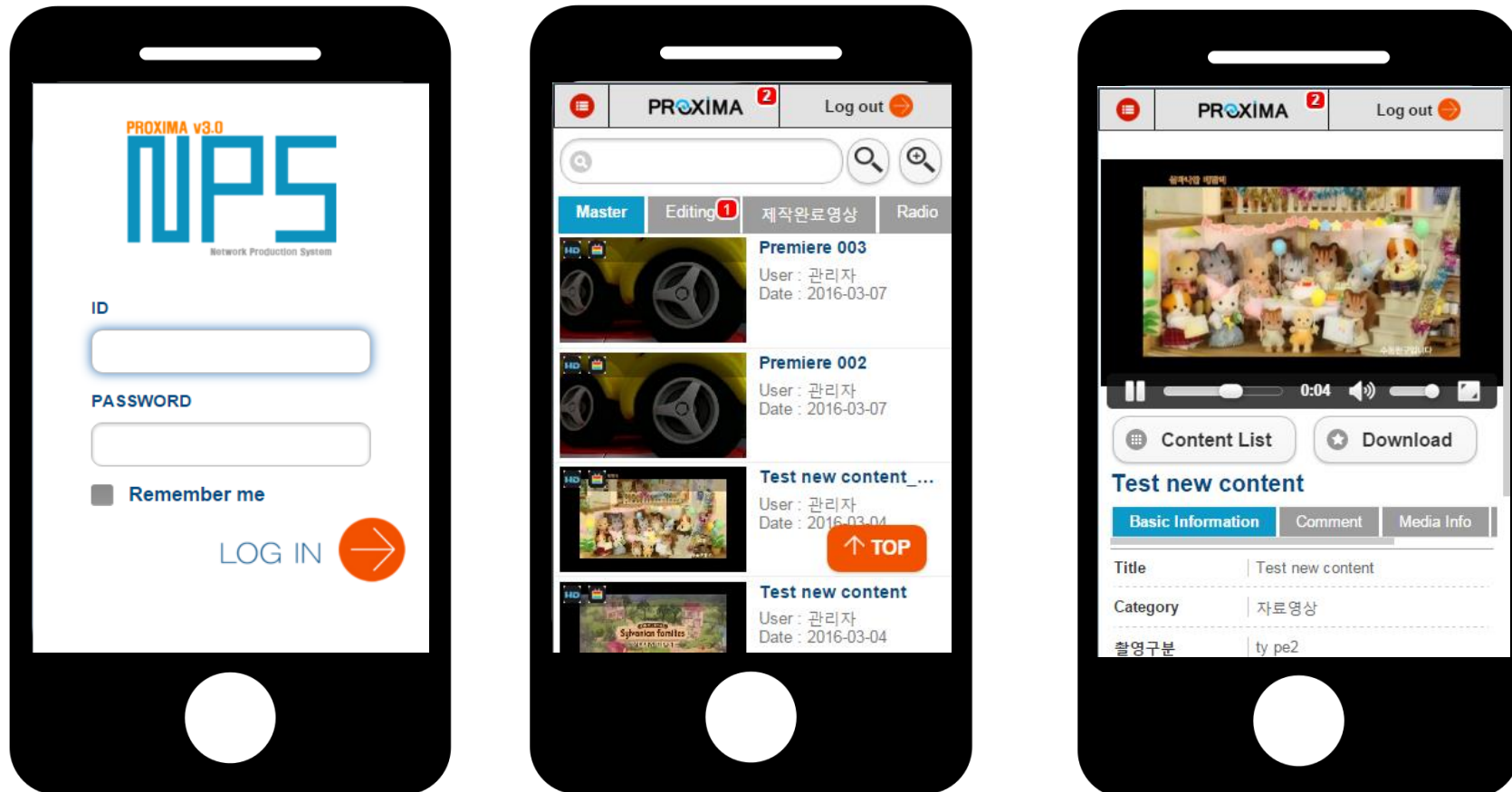
- **Advanced search**

- Provides multiple search modes which can be combined.
- Custom searches made from specific metadata selected by users
- Time Boundary, Text and other fields can be assigned for the search



Browse from Mobile

Users also can access Proxima using Smartphones. Since Proxima also provides a mobile web interface, users can use web browsers from their mobile phones. Proxima's mobile interfaces are tested under Android smartphones and iPhones.



User Metadata Configuration

Proxima provides the simplest way for site administrator to configure the metadata for his sites. As every broadcaster has its own workflow, every broadcaster must have its own metadata schema. Proxima is coming with easy but powerful way to configure the metadata for content manufacturers.

- **Supported Media Types**

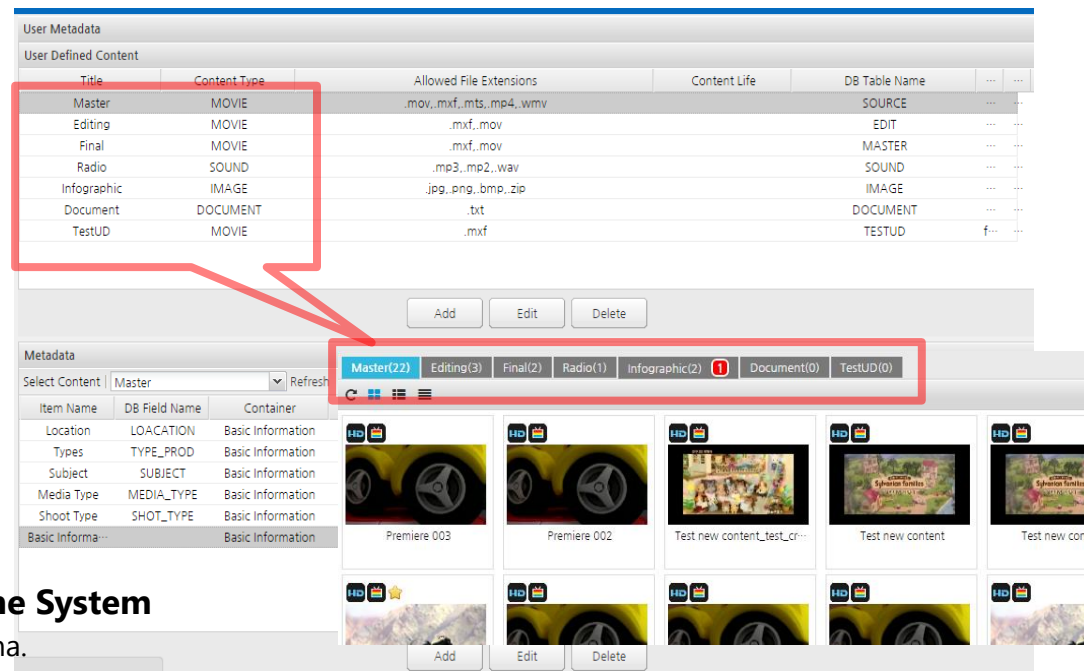
- Movie(Video)
- Images
- Sequence Images
- Sound(Audio)
- Text(Documents)

- **Supported Metadata Item Type**

- Container
- One Line Text, Multi Line Text
- Combo Box, Check Box
- Date & Time
- Numeric
- Tree

- **Multiple Metadata Schema in One System**

- One tab will be created for one schema.
- Workflow and Access rights assigned by each schema.



Custom metadata schema is shown as TABs to users

Media-Direct Technology (Using Drag-and-drop)

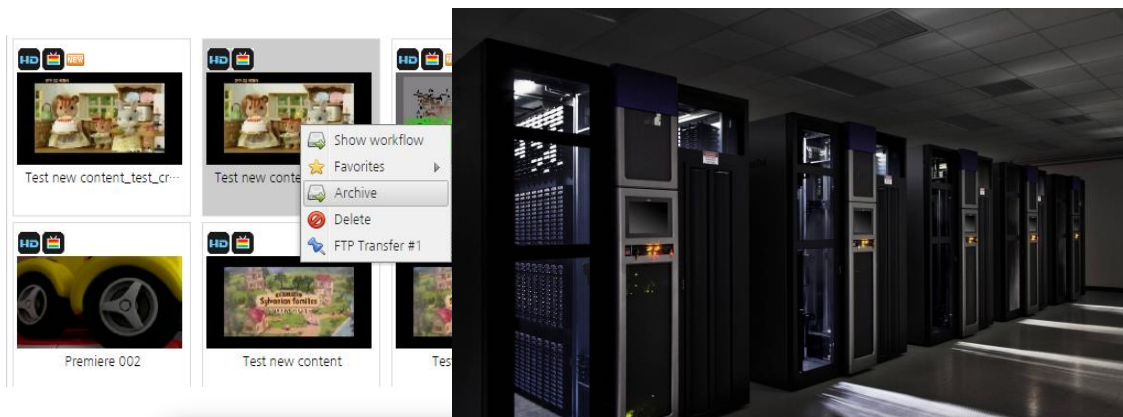
With the provided browser, users can directly drag-and-drop to the media applications. The powerful drag-and-drop from Web browser is the only solution from Gemiso.



Archive from Proxima

In order to archive valuable media to Tape library and Optical Disc Archive, Proxima supports SGL's Flashnet archive system. The tight integration between Proxima and Flashnet archive makes 2 systems work as 1 system.

- **Manual Archive**
 - Archive through Context menu
- **Automatic Archive**
 - User configurable archive rules
 - Archive by user defined rules
- **Log**
 - Accessing Flashnet logs from Proxima.



Monitor FlashNet Processes

FlashNet Log

File View

Clear Filter Filter Status: OFF Max: 100 Rows Show Cache Fill Go Save Results

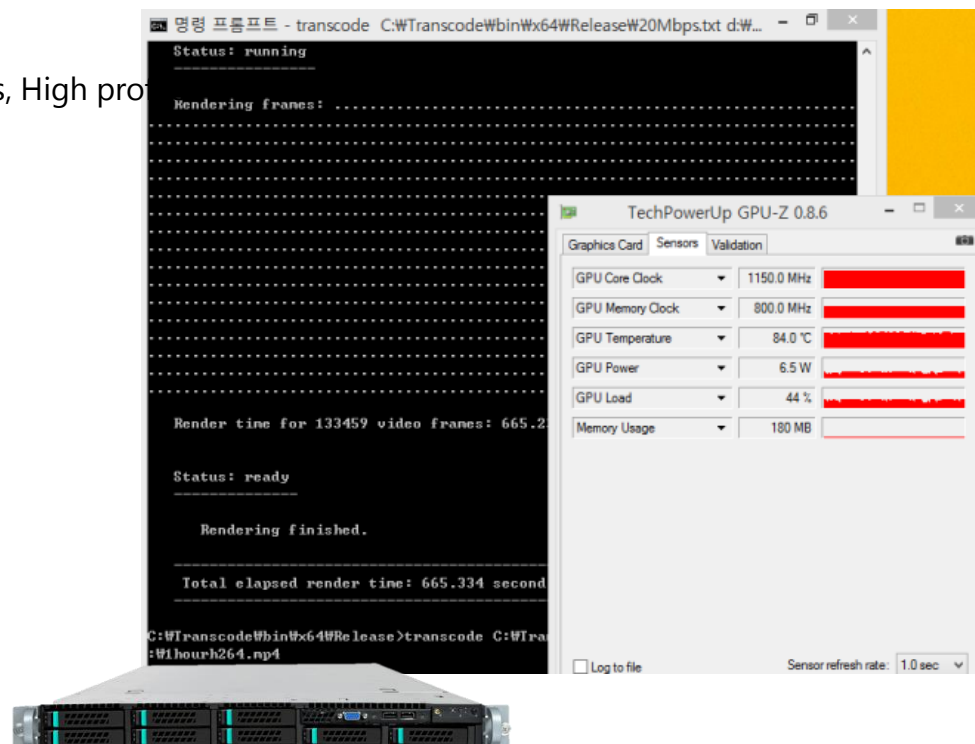
VOLUMES	PROCESS	DISPLAY NAME	SESSION ID	DRIVE NAME	GRQ
SGLDSK1	4:37 Query Changer	STK 9730 327HG0040P	2F0D98E026296D46B0C29458758BCE8D0		
	5:04 Query Changer	STK 9730 327HG0040P	7FCF45F14BD7C0449A57595E9651173		
	4:25 Query Changer	ADIC Scalar 24 DELL1_313466	9610038A0F5144595A168E8F02D0072		
	2:12 Query Changer	ADIC Scalar 24 DELL1_313466	2E7AECA23399444B2FEA46EBC4C5488		
	0:01 Query Changer	STK 9730 327HG0040P	A40D1D08B154F540AF9E8D085C13358F		
	9:43 Query Changer	STK 9730 327HG0040P	5E53CE0FA1D6747AC27D0EBC33BA50F		
	4:22 Query Changer	STK 9730 327HG0040P	0EF3455D3C10FF43AFFF14B51A2F86C		
	4:11 Query Changer	STK 9730 327HG0040P	A0DB2A6F14FB6449C0319581E31CFA1		
	3:56 Query Changer	STK 9730 327HG0040P	E065EFA08F33944C92D4EC4C57D98C75		
	2:54 Query Changer	STK 9730 327HG0040P	DC9F5D9D16FC4D4AC5D2D08F2CC300		
	1:50 Move Into Changer	Port 1 -> Slot 1	EC5E71AC14D944B70228678C35A04B		
	0:43 Move Out Of Changer	Bulk Export	BF361DD15A29C94AD6A31B39C7258FB	Drive2	FC7
	0:21 Unload Drive	Bulk Export	3C4175AA0A3CAF478DA8A2E071EECE72	0481	
	0:09 Move Out Of Changer	Bulk Export	28933FF1D6723E40AF78A82E2A66FCEB	FC7	
	7:34 Move Out Of Changer	Bulk Export	276786FC4D70C4882712D4D0F04767	FC7	
	6:42 Move Out Of Changer	Bulk Export	F93B6A8AD0B0034C5760A4672999E41B	FC7	
	5:19 Move Out Of Changer	Bulk Export	FCDB4E01D689034FB937600E4A8326C4	FC7	
	3:31 Query Changer	STK 9730 327HG0040P	6368F02A5915E941BC463AC51212546		
	12:47 Query Changer	STK 9730 327HG0040P	4C6A01E9B2280B49DAD0130A7C900FE		
	0:31 Move Out Of Changer	Bulk Export	36EB0494D1187459CAFD5D07FAHDBA	Drive2	FC7
	5:44 Backup	fs0:clp.dr\LONGGOP-15Mbs\LONGGOP-OP1A-10M	99D5676D94A8B4CB0940CC02D51B68B	Drive1	FC7
	0:28 Move Out Of Changer	Bulk Export	00AC990CE0FA294DADEE24B9729658	FC7	
	15:16 Move Out Of Changer	Bulk Export	127A50ABF7466FA9B85A786B1A7E73	FC7	
	15:07 Move Out Of Changer	Bulk Export	E67FC8660CF2764D0E90321AD0885772	char	
	12:05 Unload Drive	Bulk Export	19B4DA2178998E498B601877A3F617	Drive1	0481
	4:16 Backup	fs0:clp.dr\JE-VTR-IMX30/E-VTR-IMX30-10M	8598729CE78D0C246887212FA86916ACE	Drive1	FC7
	2:08 Backup	fs0:clp.dr\MP-OP1A-IMX30\MP-OP1A-IMX30-10M	A81949DC16B3049815F001048C13563	Drive1	FC7
	9:04 Label Volumes	Stacker 1, 4-5	6F0AF5CF8509C4881294D616D7144F	Drive2	
	9:04 Label Volumes	Stacker 1, 1-3	BA041B454732A49850135E1FF0C56A	Drive1	
	8:48 Unload Drive	Bulk Export	8CBCEEB24C0B304CB6C2F6AB25EF138	Drive1	0481
	8:09 Backup	fs0:clp.dr\MP-OP1A-IMX30\MP-OP1A-IMX30-10M	3AB4003CEE05645853717D53EC7088F	Drive1	FC7
	12:09 Query Changer	STK 9730 327HG0040P	4EF164676FBE44FA85CEBE7FBC1797		

[No Comment Supplied]
Volume SGLDSK1
Archive 35 is 1911100e+007 bytes
Written by a GEMISO NAS
Max block size 64K
Index has 11 entries
flags cVA
files written on Wed Mar 09 02:18:24 2016
Archive ID 40C5C5D9-65B1-4B36-89F4-2655738DC40E

Close

Modules - Transcoder

- **World fastest Performance**
 - XDCAM HD → 1920x1080 30p/25p h.264 10Mbps, High profile
 - Up to 6.9 times faster than real-time
 - IMX SD → SD 30p/25p h.264 2Mbps
 - Up to 10 times faster than real-time
- **Fully GPU supported**
 - Fully utilizing Intel IRIS Pro graphics up to 3 GPUs
 - CPU power consuming for decoding mostly
- **Unbeatable quality**
 - Proven h.264 quality of Intel QSV
 - Final Cut Pro X – Faster profile
- **Profiles**
 - Baseline / Main / High Profiles supported

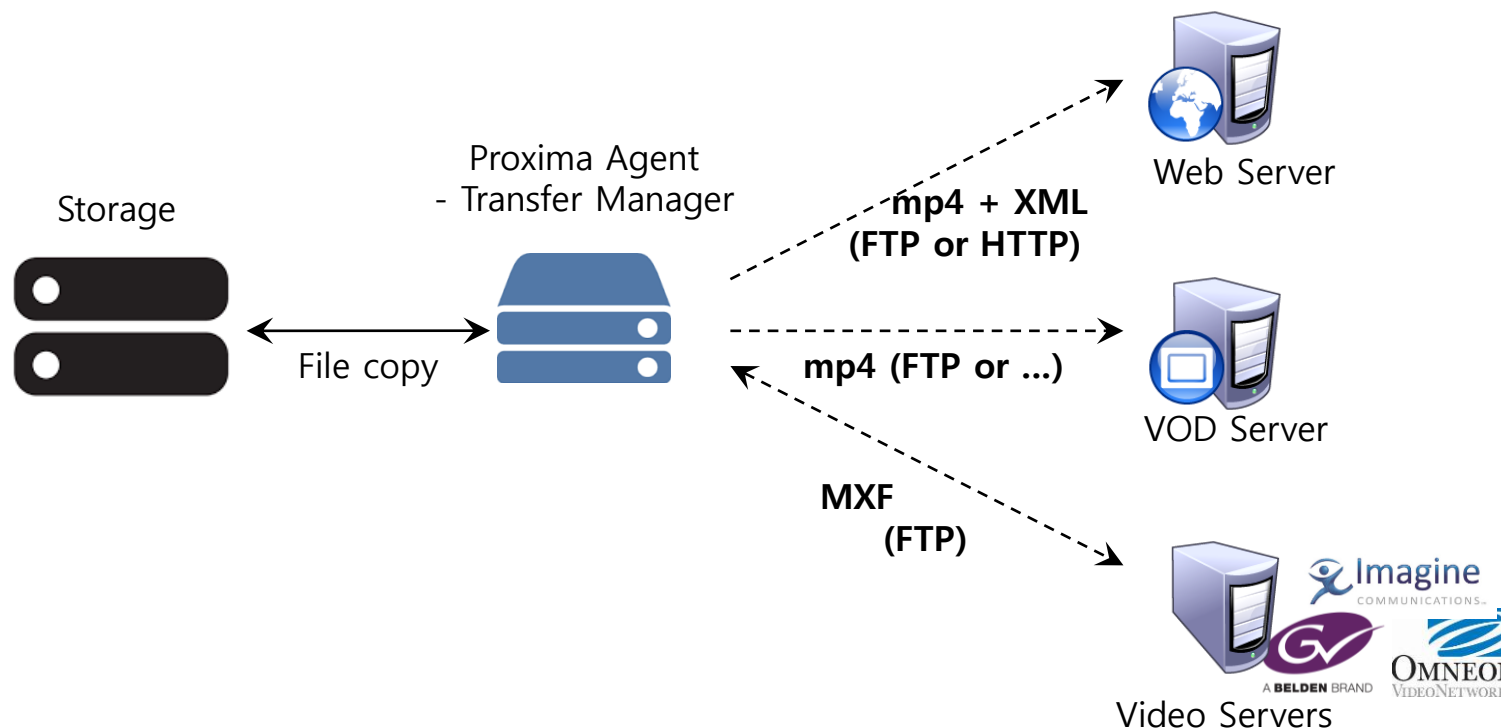


World fastest h.264 generation from MPEG2 video enables Proxima to **create OTT(Over-the-top) content in shortest time.**

Modules - Transfer

Sometimes, users need to transfer the media to the other places such as Video Servers, Web servers or other kind of systems. Gemiso Transfer supports the features; sending media to the other place or collecting media from outer place.

In some cases, Transfer manager also repackages media into other wrapper formats such as MOV-MXF, LXF-MXF and MXF Op1a-OP Atom.



1

2

3

Customers

